

For you to create

**Fundermax**

Fundermax is an Austrian company with long tradition.

**We value nature**, because it provides the valuable raw materials for our products.



We live  
Perfection



We love  
Design

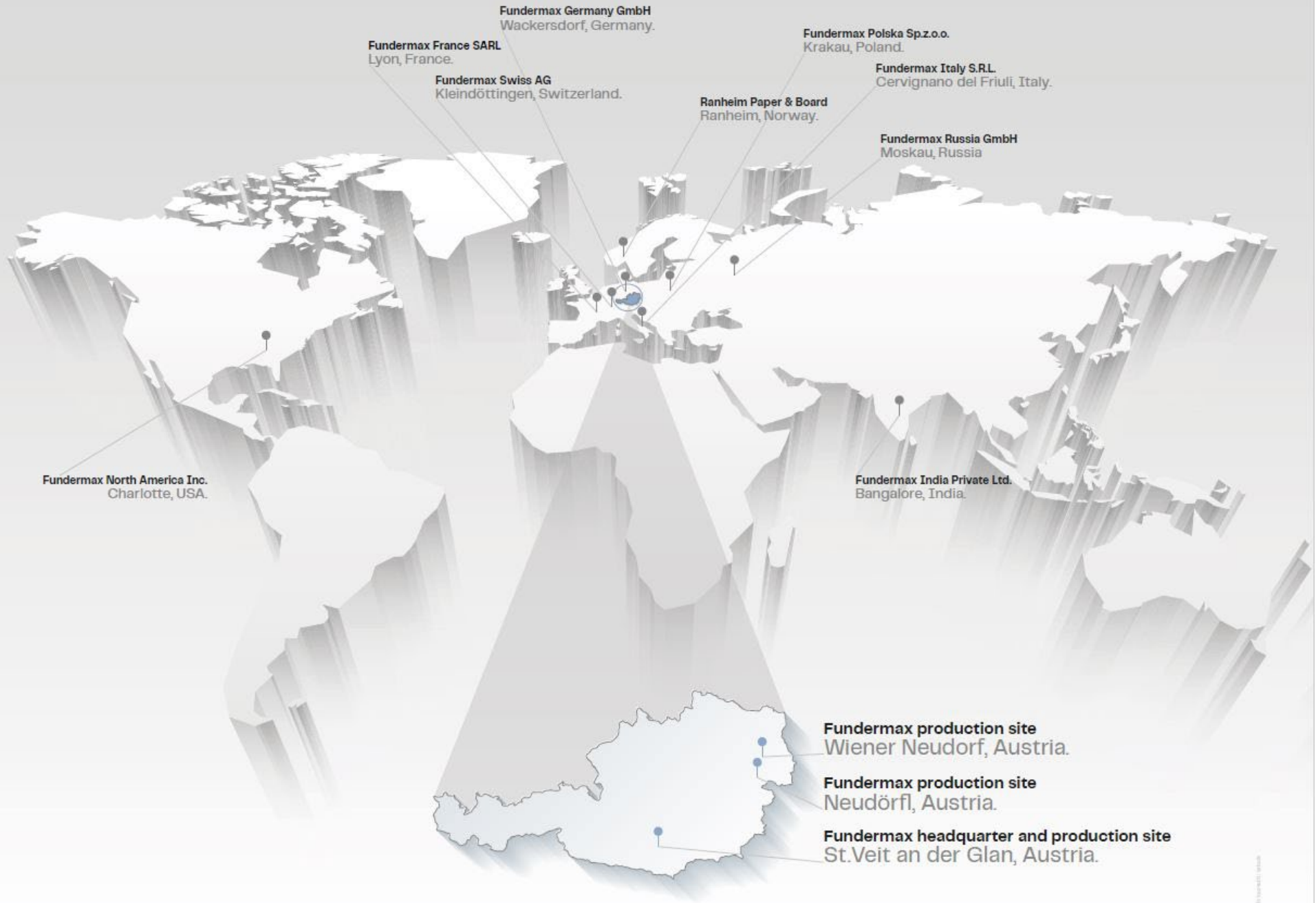




We embrace  
Individuality



We complete  
what nature  
gives us







# St. Veit an der Glan

Corporate headquarters and production site, Austria

approx. **440 employees**  
approx. **260.000 m<sup>2</sup>** total area

**3 plants & 3 product groups:**  
Biofiber Board, Star Favorite & Premium Star

Annual production capacity of approx. **14 million m<sup>2</sup> of decorspan**  
Annual production capacity of approx. **24 million m<sup>2</sup> biofiber**

**62.000 MWh of district heating** for around **4.000 households**  
per year  
**75.000 MWh of green electricity**, comparable to **18.000 households** per year





# Wiener Neudorf

Production site, Austria

approx. **500 employees**  
approx. **82.000 m<sup>2</sup>** total area

**3 product groups:**  
laminates, compact laminates and m.look

**approx. 2.7 million m<sup>2</sup>** decorative laminates  
HPL production capacity per year

**approx. 8.2 million m<sup>2</sup>** Max Compact board  
production capacity per year





approx. **200 employees**  
approx. **320.000 m<sup>2</sup>** total area

approx. **550.000 m<sup>3</sup>** production capacity raw particleboard per year

**85.000 MWh of district heating** for approx. **5.000 households** per year and thus reduction of emissions from domestic heating by 25.000 tons per year  
**65.000 MWh of green electricity**, comparable to **17.000 households** per year

Green energy: self-supply with green electricity in Neudörfel

# Neudörfel

Production site, Austria





# Ranheim

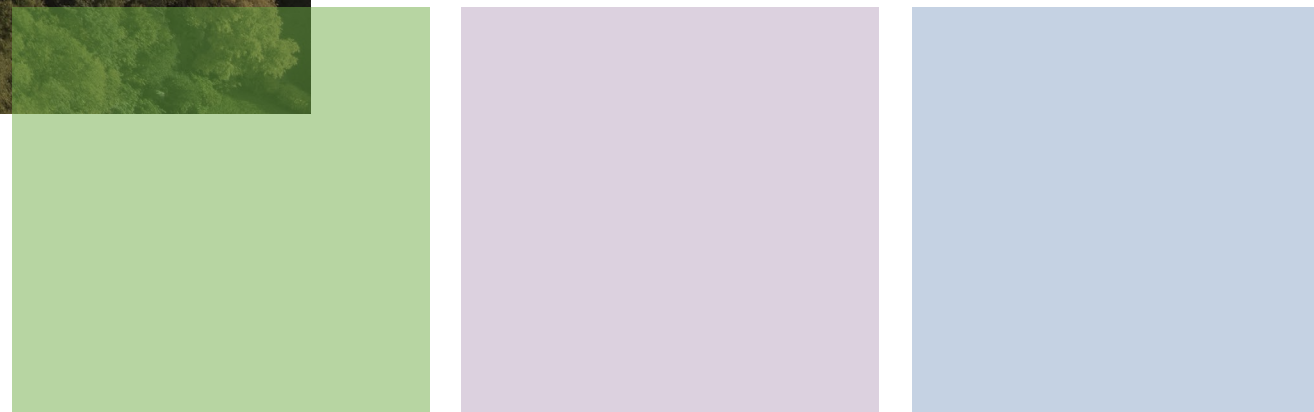
Production site, Norway

approx. **85 employees** on average per year  
approx. **126.000 m<sup>2</sup>** total area

approx. **110.000 tons** of paper production capacity 2022  
approx. **35 million m<sup>2</sup>** solid board production capacity 2022

**2 product groups**  
paper and solid board

**100%** of the **raw material** is old **recycled cartons**  
**100% scrap from production** is reprocessed into **paper**







## Fundermax

Wood-based materials (with and without decor) and decorative laminates for interior finishing, facades, doors, furniture and the automotive and footwear industries.



High-quality electrical insulation materials, technical laminates, composites (= composite materials or prepregs), high-precision parts for special applications, materials for aircraft interiors of passenger cabins and cargo holds.



High-quality plastic composites for the ski and snowboard industry, panel building, automotive, construction, sports and leisure industries.

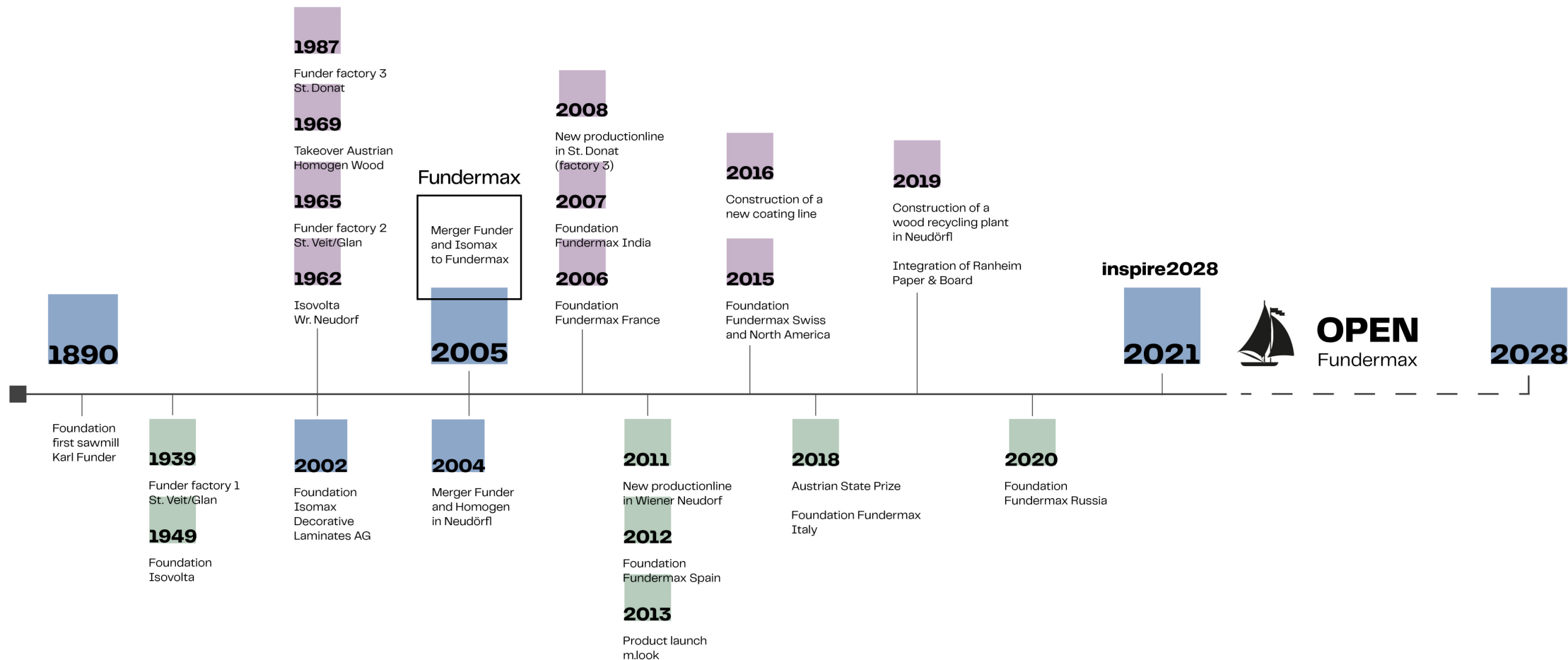


50 employees at 5 locations support the Austrian subsidiaries of Constantia Industries AG in all segments of the IT world.

# Fundermax.

**1.400 employees**





# Corporate history





# In harmony with nature

Sustainable production with  
natural raw materials

**100%** procurement from regional forestry.

**80%** energy production from biomass.

**30%** CO<sub>2</sub> reduction since 2005

**140.000 MWh** green electricity

**147.000** district heating





# Regional engine

approx. **25 million euros investment** per year

approx. **240 million euros purchasing volume** per year  
- **70%** of which in **Austria**

**72%** of **suppliers** from **Austria**  
- **50%** of them from **Carinthia and Lower Austria**





# Customer-centric

In our thoughts and actions, our customer is uncompromisingly in the center.

**Co-creation is our attitude through which we realize this promise - consequently and consistently.**



# Co-Creation

Our 1.400 employees understand  
**teamwork as a matter of course.**

**Co-creation is our form of collaboration**  
– open and agile.



We offer a **unique,**  
**inspiring** world of products.



For you to create

Fundermax



Wood based materials  
Star Favorit  
Premium Star  
Homogen – chipboards  
Biofaser

For you to create

Fundermax



Compact laminates  
Max Decorative laminates – HPL  
Max Compact Interior  
Max Resistance<sup>2</sup>  
m.look



Compact laminates  
Max Compact Exterior  
m.look



foto credit: Budivělňa Zirka



Architect. ISTO  
Product. Max Compact Interior  
Surface. SX  
Decor. 0080 Black

**Kitchen, Black Object**

**Kiev, Ukraine**



# Residential house

Bern, Switzerland

Fundermax

Architect. Tormen Architekten AG

Product. Max Compact Exterior

Surface. NT

Decor. 0768 Sparrow



photocredit: Mark Drotsky



# Pop up Store

Vienna, Austria

Architect. Peter Paller – durchgedacht Design & Architektur

Product. Max Compact Exterior

Surface. NG

Decor. 0085 White



fotocredit: Severin Wurnig





Fundermax



fotografie Corey Gaffner



Architect. Rockhill and Associates

Product. Max Compact Exterior

Surface. NT

Decor. 0922 White



**Student dormitory**

**Kansas, USA**



# Kitchen Aptico

Vienna, Austria

Product. Decorative laminates, Star Favorit

Surface. AP, GA

Decor. 2206 Fango, 0794 Patina Bronze







foto credit: Wohnbau Schultz GmbH



## Mountain station

Hochzillertal, Austria

Architect. Wohnbau Schultz GmbH

Product. Max Compact Exterior

Surface. NT

Decor. 0428 Cave, 0427 Skyline



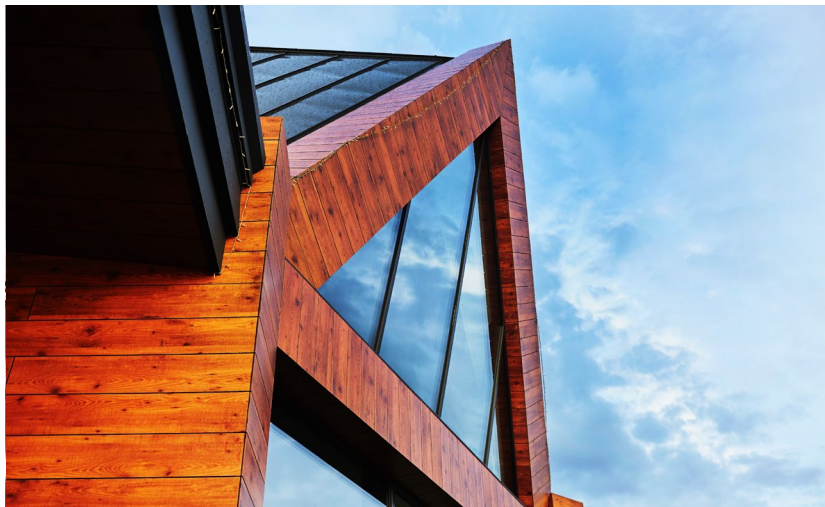
Architect. Marko Savitsky  
Product. Max Compact Exterior  
Surface. NT  
Decor. 0927 Creek



**IVENT Hall**  
**Lwiw, Ukraine**



**Riverwood Park**  
Cherkasy Oblast, Ukraine



Architect. Christodoulides Christos and Mariot

Product. Max Compact Exterior

Decor. 0803 Pine Tyrol



## Rybalski Kitchen

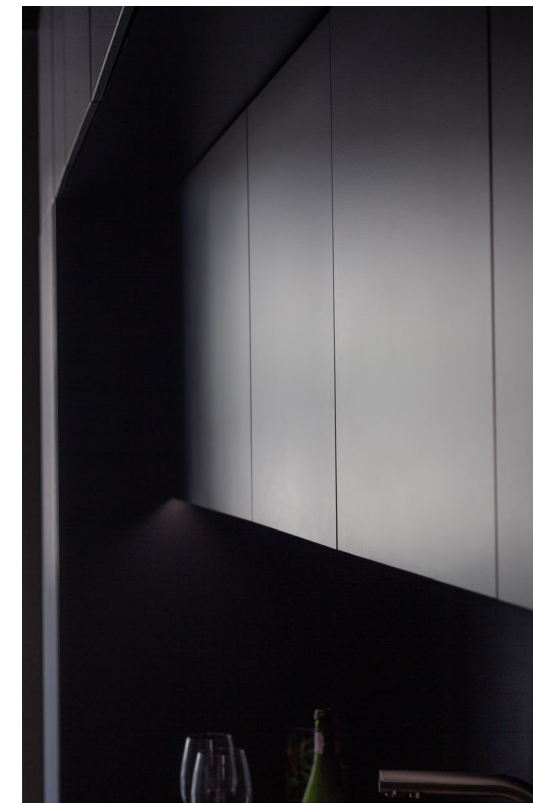
Kiev, Ukraine

Architect. Kateryna Ukhovska

Product. Max Compact Interior

Surface. FN, NN

Decor. 0566 Kara, 0386 Blues





Architect. Miguel Ángel Raga Martínez  
Product. Max Compact Exterior  
Surface. NT, NG  
Decor. 0085 White, 5171 Polar Oak



**Chalet Loma Bada**  
Spain







## Two-family house

Architect. Daniela Filipovits-Flasch

Product. Max Decorative laminates

Surface. FH, NA, SG

Decor. 0085 White, 0320 Sereno, MO03 Alu Stainless steel tone



foto:redit: Zeitlosfoto







## School building

Wheaton, USA

Architect. Grimm + Parker

Product. Max Compact Exterior

Decor. 6020 Satsuma, 0647 Golden yellow, 0736 Saffron yellow







foto credit: John Gawley

## Training center

North Omaha, USA

Architect. RDG Planning and Design

Product. Max Compact Exterior

Surface. NT

Decor. 0717 Atlantik, 0237 Gentian blue,  
0725 Yellow green and 0712 Steel blue







## Bespoke Kitchen Steyr/Dietach, Austria

Producer. Breitschopf GmbH

Product. Star Favorit

Surface. NI, NA

Decor. 4037 Maryland Oak





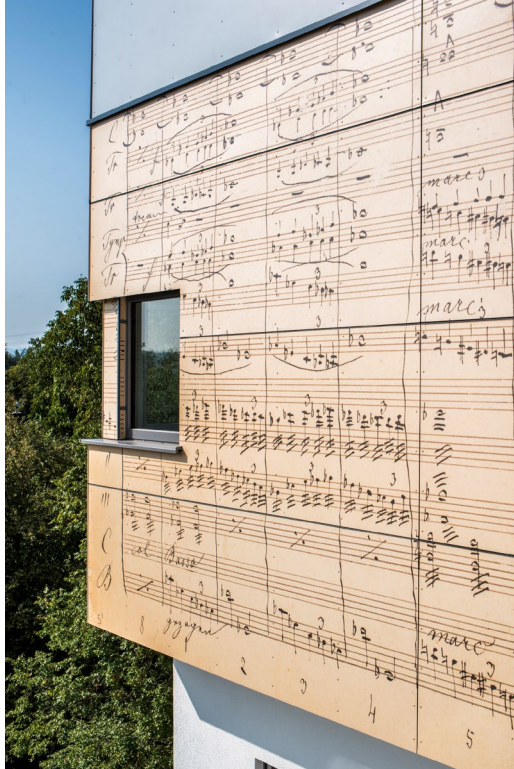


foto credit Johannes Hemetsberger

# VOLKSSCHULE KRONSTORF

Architect. Eder ZT GmbH  
Product. Max Compact Exterior  
Surface. NT  
Decor. ID Exterior Individualdecor

**School building**  
**Kronstorf, Austria**





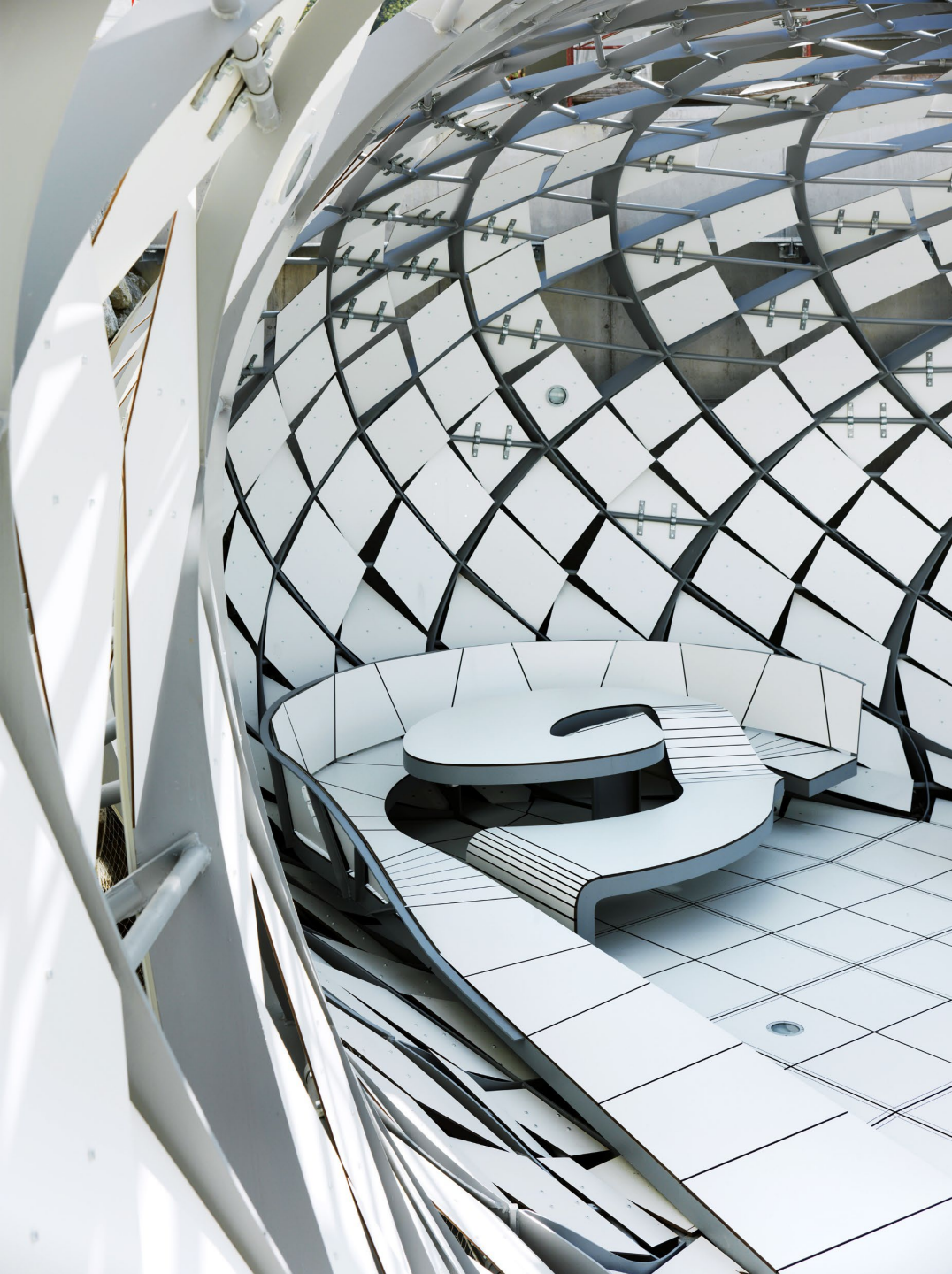


foto credit: Fundermax

## Pergola Haus Z

Austria

Architect. heri & salli (Heribert Wolfmayr and Josef Saller)

Product. Max Compact Exterior

Surface. NT

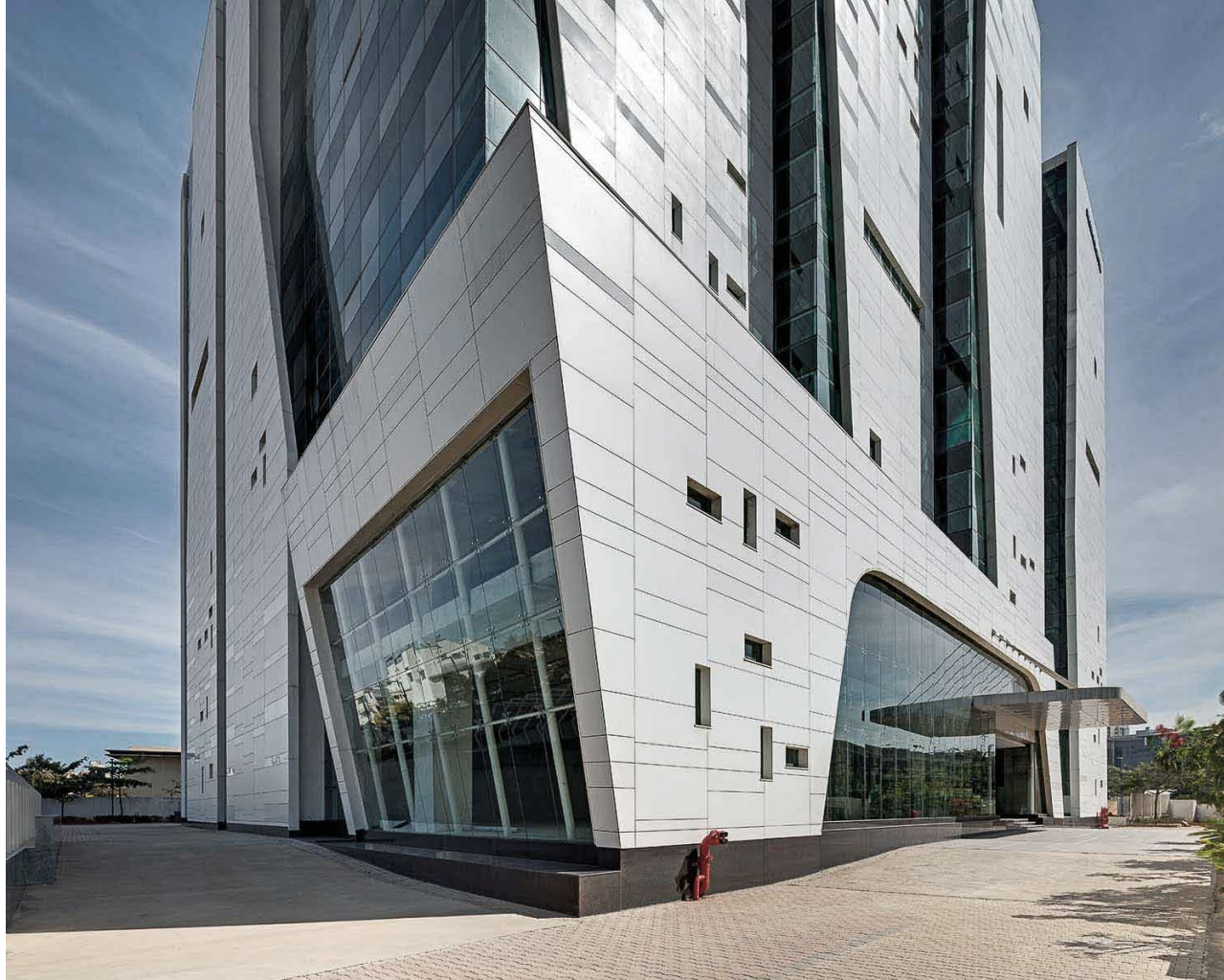
Decor. 0085 White



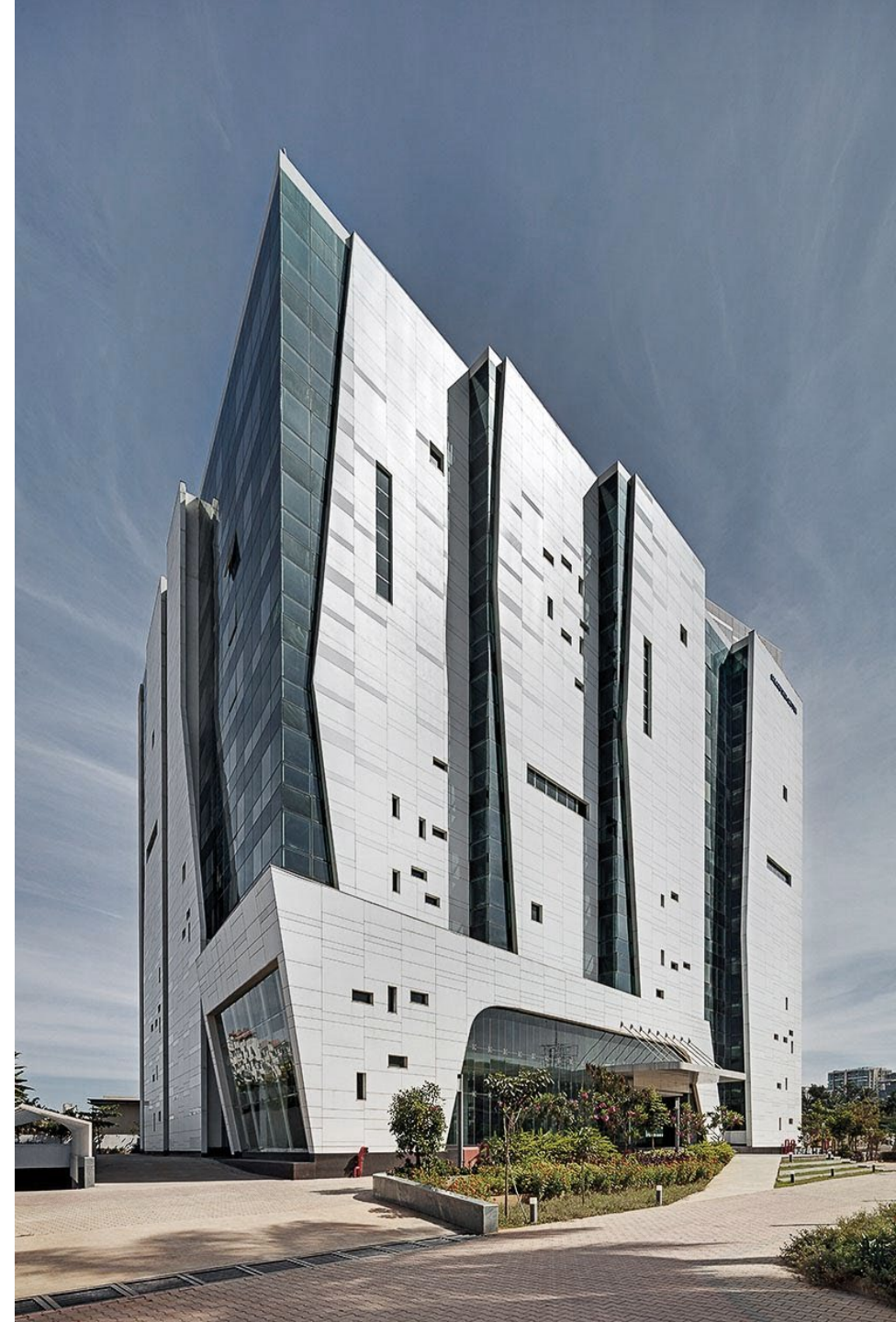
# Sattva Galleria

Bangalore, India

Architect. Sudhakar Pai Associates/SPA  
Product. Max Compact Exterior F- quality  
Surface. NT, NG  
Decor. 0085 White



Photocredit: hamanth Patil, Rays & Greys







## Novotel Kochi

Kochi, India

Architect. In-House Architect of the Muthoot Pappachan Group

Product. Max Compact Exterior F- quality

Surface. NT

Decor. 0429 Corro

fotocredit: Muthoot Pappachan Group



Architect. Yuriy Kراسiy (Skotch Group)

Product. Max Compact Interior

Decor. 0427 Skyline, 6010 Electric

## Fitness center

Kiev, Ukraine

fotocredit: Oleksiy Koluchkin

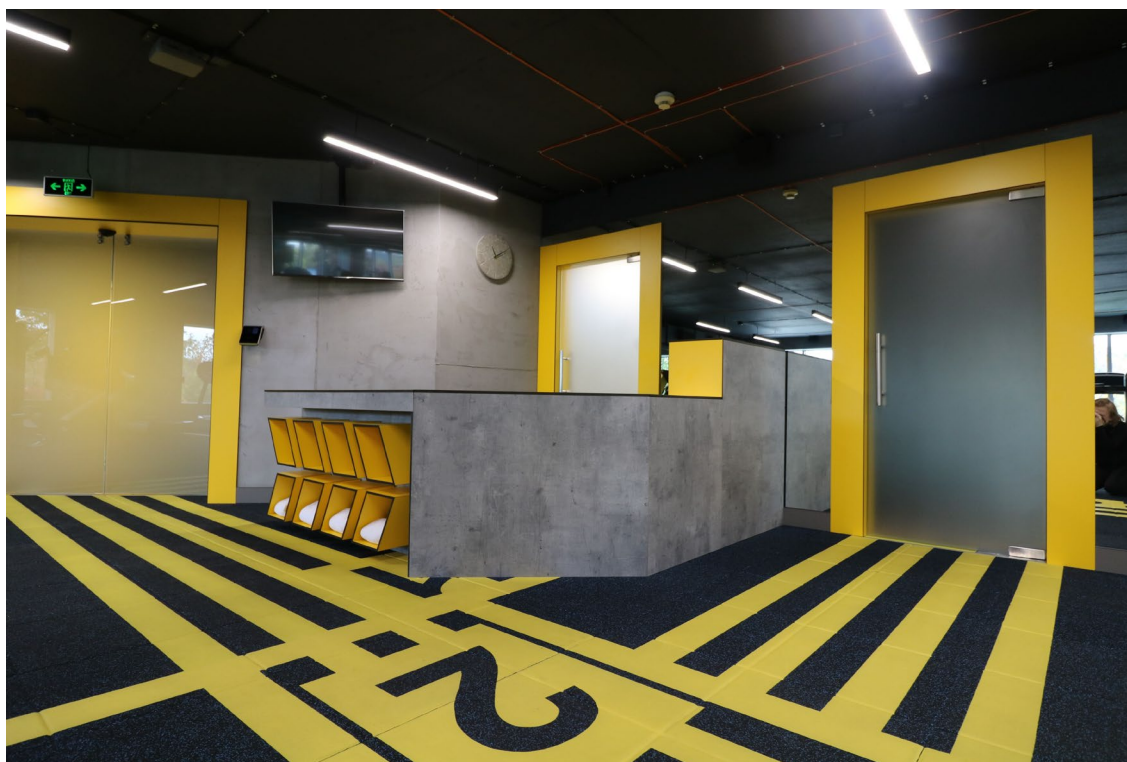






foto credit: mahore architekten

## **Project m.u.k. Saalfelden, Austria**

Architect. DI Andreas Hörl  
DI Robert Reichkenderl, mahore architekten  
Product. Max Compact Exterior | F-quality  
Surface. NT  
Decor. AUTN Authentic Natura



## Shopping center

Belgrade, Serbia

Architect. Inka Studio Doo Lazarevac

Product. Max Compact Exterior

Surface. NT

Decor. 0927 Creek

fotocredit: Relja Ivanic





**Kindergarden**  
**Haschendorf, Austria**



fotocredit. Michael Markl



Architect. SpielWERT®-Unternehmensberatung

Product. Star Favorit Standard P2

Max Compact Exterior | F-quality

Surface. NT, FH

Decor. 2124 Camomilla, 0039 Libero, 0112 Top White

ID Interior Individualdecor, ID Exterior Individualdecor



Fotocredit: Michael Markl

## Residential Building

Vienna, Austria

Architect. Atos Architekten

Product. FunderPlan





**Family Home**  
**Latsia, Cyprus**



photocredit: FunderMax/D.C. Demetriades Ltd.



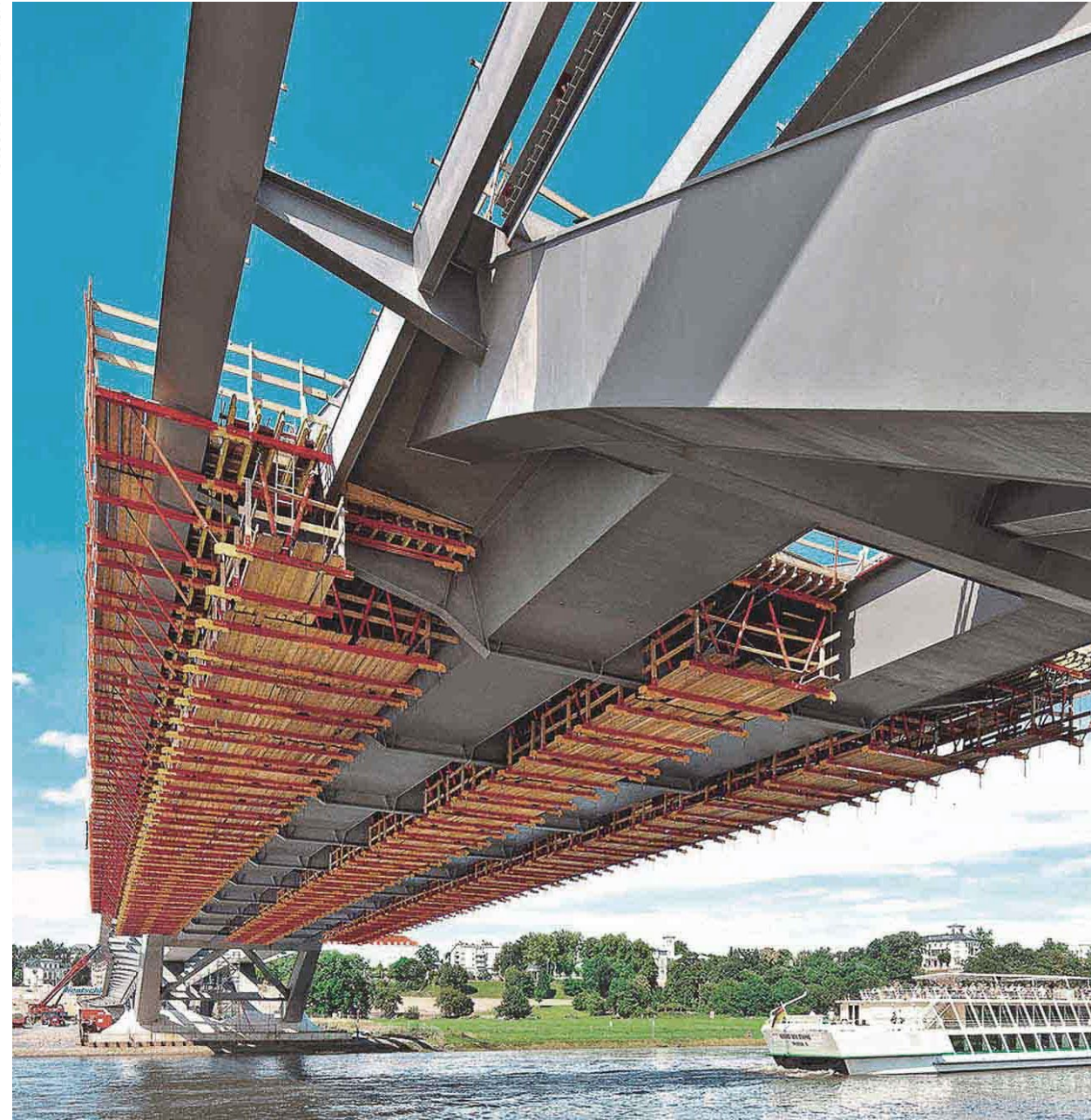
Architect. Christodoulides Christos and Mariot  
Product. Max Compact Exterior | F-quality  
Surface. NT  
Decor. 0070 Carbon Grey



# Waldschlösschen-bridge.

Dresden, Germany

Main contractor. PERI GmbH  
Product. Homogen - Chipboards



Fotocredit: PERI GmbH

Fundermax



**OPEN**

For you to create

[www.fundermax.at](http://www.fundermax.at)

[office@fundermax.biz](mailto:office@fundermax.biz)



Fundermax  
**"More than plate"**

Tel.: +43 (0)5/9494-0  
Fax: +43 (0)5/9494-4200

Fundermax GmbH  
Klagenfurter Straße 87-89  
A-9300 St. Veit/Glan

[www.fundermax.at](http://www.fundermax.at)  
[office@fundermax.biz](mailto:office@fundermax.biz)